

:

:

:

:

:

"Bitzer"





Version 5.3.1

4 4G - 30.2Y

15.09.2011 /

2 / 7

4x 4G-30.2Y-40P

-- íäðãñ÷èòúääãîä äîîëíèòäëüîä îäîðäîäîäèä --



Version 5.3.1

4 4G - 30.2Y

15.09.2011 /

3 / 7

R507A

150.0 kW

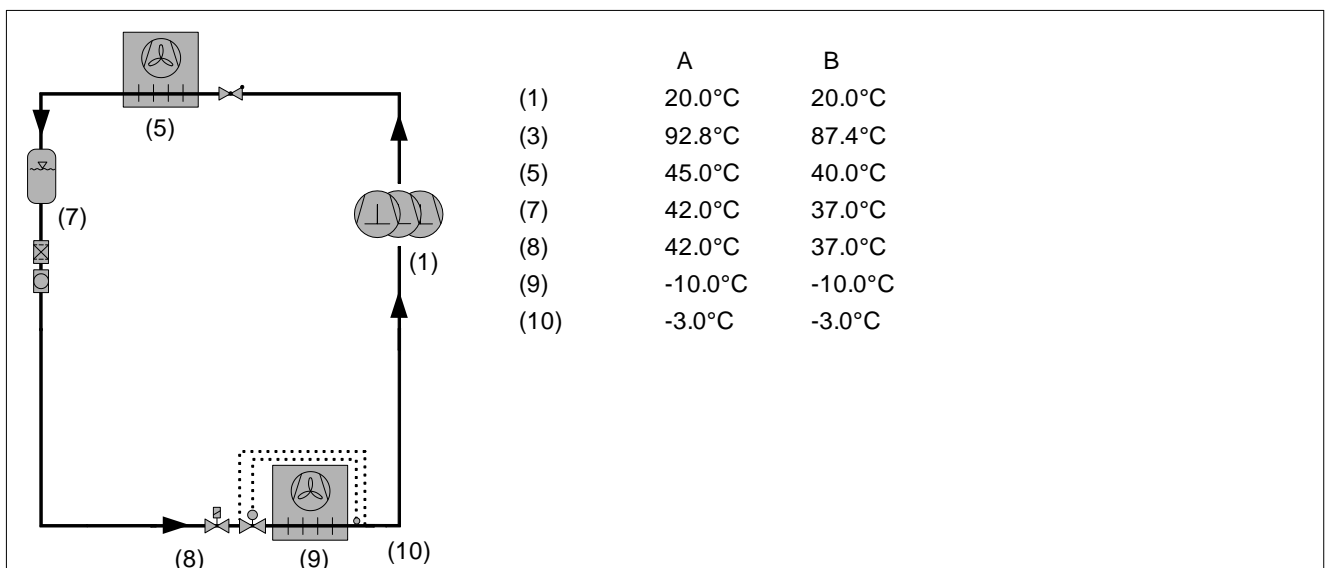
50 Hz / 400 V

3.0K

20.0°C

7.0K

T	SST: SCT:	A					B				
		-10.0°C 45.0°C					-10.0°C 40.0°C				
		Qo kW	Pe kW	COP W/W	%		Qo kW	Pe kW	COP W/W	%	
		151.4	81.8	1.85	101.0		167.4	78.1	2.14	111.6	
1	4G-30.2Y-40P	37.9	20.5	1.85	25.0		41.9	19.52	2.14	25.0	
2	4G-30.2Y-40P	37.9	20.5	1.85	25.0		41.9	19.52	2.14	25.0	
3	4G-30.2Y-40P	37.9	20.5	1.85	25.0		41.9	19.52	2.14	25.0	
4	4G-30.2Y-40P	37.9	20.5	1.85	25.0		41.9	19.52	2.14	25.0	





4 4G - 30.2Y

Version 5.3.1

15.09.2011 /

4 / 7

R507A

150.0 kW

50 Hz / 400 V

3.0K

20.0°C

7.0K

T	SST: SCT:	A	B
		-10.0°C 45.0°C	-10.0°C 40.0°C
-	-	183.8 kW	200 kW
-	-	151.4 kW	167.4 kW
-	-	101.0 %	111.6 %
-	-	266 kW	279 kW
-	-	81.8 kW	78.1 kW
(400V)		140.0 A	134.8 A
/		1.85	2.14
		5472 kg/h	5586 kg/h
		92.8 °C	87.4 °C



4 4G - 30.2Y

Version 5.3.1

15.09.2011 /

5 / 7

4G-30.2Y-40P

R507A
150.0 kW
50 Hz / 400 V
3.0K
20.0°C
7.0K

T	SST: SCT:	A	B
		-10.0°C 45.0°C	-10.0°C 40.0°C
-	-	46.0 kW	50.1 kW
-	- *	44.0 kW	48.2 kW
-	-	37.9 kW	41.9 kW
.	.	20.5 kW	19.52 kW
(400V)	(400V)	35.0 A	33.7 A
/	/	380-420V	380-420V
/ *	/ *	1.85	2.14
.	.	2.15	2.47
.	.	1368 kg/h	1396 kg/h
.	.	92.8 °C	87.4 °C

* EN12900 (20° , 0)

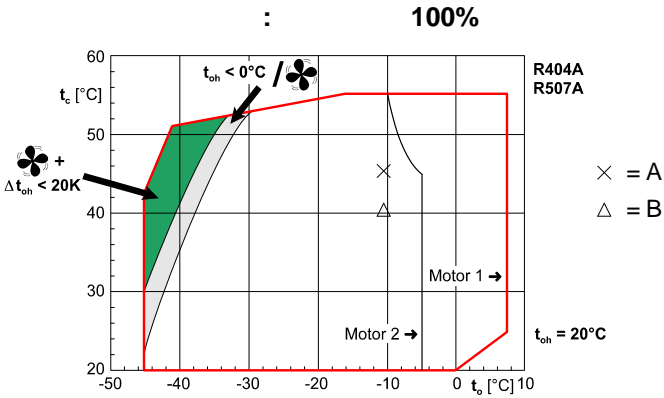


Abb. ähnlich / Fig. similar, © Bitzer



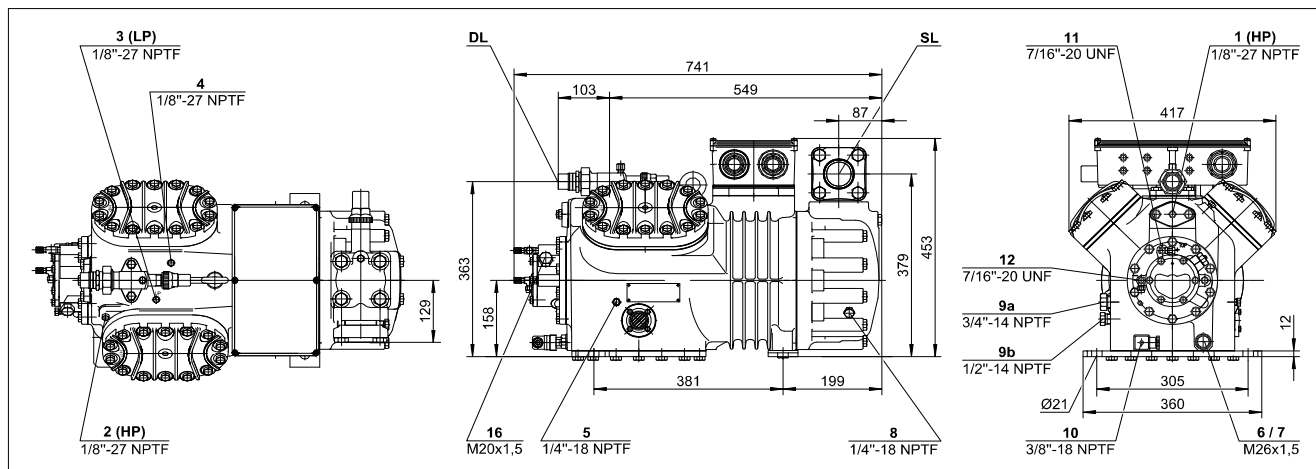
Version 5.3.1

4 4G - 30.2Y

15.09.2011 /

6 / 7

4G-30.2Y-40P (#1)



-	(1450 / 50)	84,5 m /h
-	(1750 / 60)	101,98 m /h
	(.)	4 x 75 mm x 55 mm
		380-420V PW-3-50 Hz
		53.0 A
		50/50
()	135.0 A Y / 220.0 A YY
		206 kg
		19 / 28 bar
		54 mm - 2 1/8"
		28 mm - 1 1/8"
		R 3/4"
		tc<55°C: BSE32 / tc>55°C: BSE55 (Option)
R134a/R404A/R507A/R407A/R407C		B5.2 (Standard)
R22 (R12/R502)		SHC226E (Standard)
R290/R1270		4,50 dm
		140 W (Option)
		MP54 (Option), Delta P (Option, not for R290/R1270)
		Option
		Option
		SE-B2
		IP54 (Standard), IP66 (Option)
		Option
		100-50% (Option)
		Option
		Option
		Standard
	(+5°C/50°C) @50	81,5 dB(A) @ 50Hz
	(-10°C/45°C) @50	81,0 dB(A) @ 50Hz
	(-35°C/40°C) @50	(86,5) dB(A) @ 50Hz
	@1 (+5°C/50°C) @50	73,5 dB(A) @ 50Hz
	@1 (-10°C/45°C) @50	73,0 dB(A) @ 50Hz
	@1 (-35°C/40°C) @50	(78,5) dB(A) @ 50Hz



Version 5.3.1

4 4G - 30.2Y

15.09.2011 /

7 / 7

1 = , 4TCS-12.2 12 . .
(R22, R407C), (R404A, R507A, R22),
R134a
2 = , 4TCS-8.2 8 . .
(R404A, R507A, R22), R134a.
" "

Standard SL(A) = (2 0173SH 4C1145SL), R22:

Varicool SL(B) =

CIC - 4VCS-6.2 (4Z-5.2) 6F-40.2 R22:

ASERCOM - ASERCOM:

- ,
-

Bitzer

ASERCOM www.asercom.org.

R404A/R507A < -20

:
" / ". 5% (HR).
" (c HR)".

:
50 (IP- 60) R404A.
:
1 " "

" / ":

1 (HP)
2 (HP)
3 (LP)

4 I - :
4b CIC-

5
6 ()

7
8 ()

9 ,

9a

9b

10

11 +

12 -

13

16 "Delta-P"